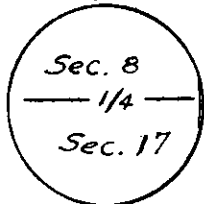


CERTIFIED LAND CORNER RECORDATION

T-14-N, R-65-W

DESCRIPTION OF CORNER EVIDENCE FOUND, AND ORIGINAL RECORD (if known)

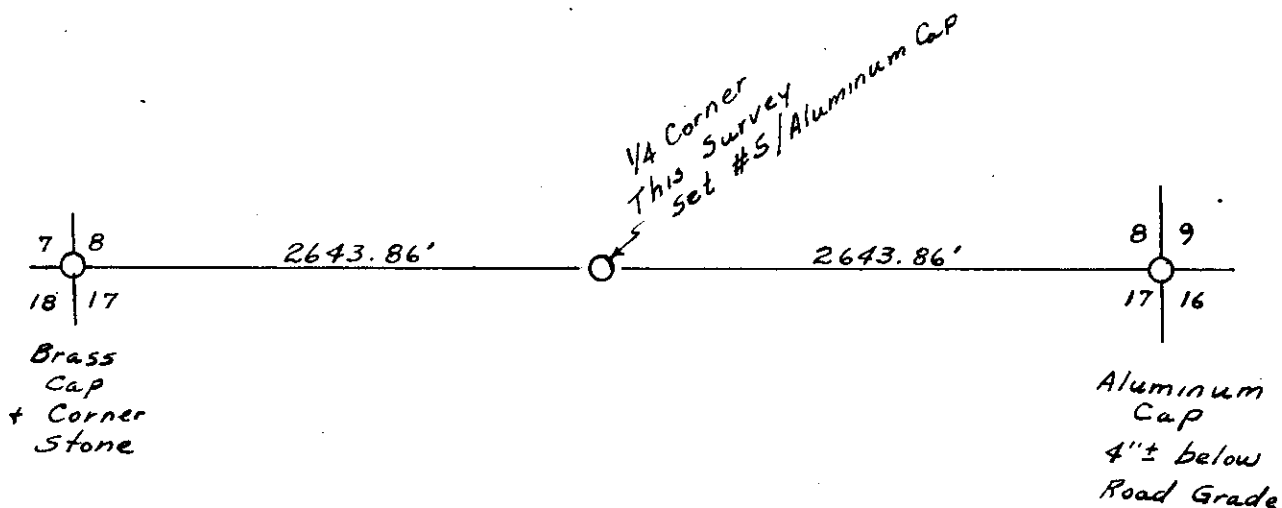


No evidence of corner found. Re-established location by single proportional measure.

DESCRIPTION OF MONUMENT AND ACCESSORIES ESTABLISHED TO PERPETUATE THE ORIGINAL LOCATION OF THIS CORNER:

Set #5 Rebar with aluminum cap. Set steel post beside Rebar and cap as a reference marker.

SKETCH, WITH COURSE AND DISTANCE TO ADJACENT CORNER IF DETERMINED IN THIS SURVEY. (May Sketch or Paste Reproduction on Reverse Side.)



I, Edward C. Fry certify that I have carefully performed or reviewed the work done on the diagrammed corner as reported on this recordation form and approve the same.

Edward C. Fry
Signature of Surveyor

Wyo. #662
Registration No.

STATE OF WYOMING,
Office of Clerk and Recorder,
County of Sarcastic

495829

This "corner record" was filed for record on the 15 day of Aug, 1978, was noted on the cross-index plat and is assigned page No. _____, in book No. _____.

Janet C. Witzel
County Official

Cross Index No. _____	T. _____	R. _____	Mer. _____
<u>J-7</u>	T. <u>14</u>	R. <u>65</u>	Mer. _____
_____	T. _____	R. _____	Mer. _____
_____	T. _____	R. _____	Mer. _____
_____	T. _____	R. _____	Mer. _____
_____	T. _____	R. _____	Mer. _____
_____	T. _____	R. _____	Mer. _____

J-7 14-65

295829 J

Photographed

Indexed

Posted

Assessor

[Handwritten initials]